

SERIES

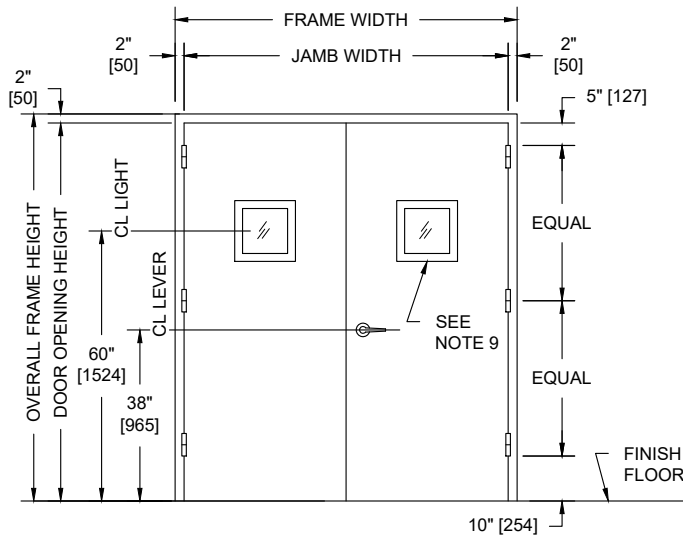
BRW

OVERLY

DOOR COMPANY

574 WEST OTTERMAN STREET
 POST OFFICE BOX 70
 GREENSBURG, PA 15601-0070
 TELEPHONE: 724-834-7300
 FAX: 724-830-2871

UL752 LEVEL 2, VISION LIGHT, NON-UL FIRE RATED PAIR WITH METAL FRAME AND WOOD DOOR ASSEMBLY

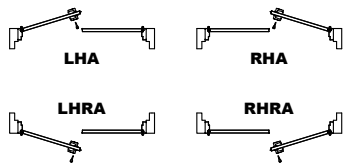


PUBLIC SIDE ELEVATION
 RIGHT HAND REVERSE BEVEL SHOWN

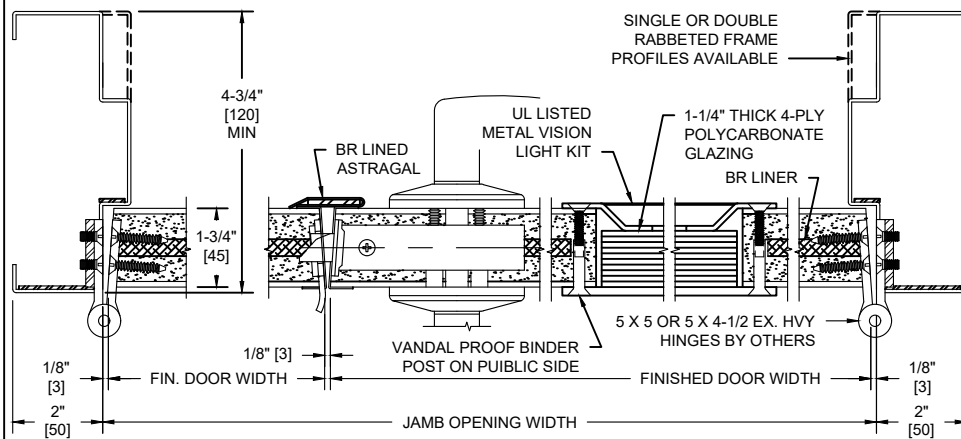
NOTES:

- Both doors, frame, astragal and vision light kits UL listed for UL752, Level 2 bullet resistance.
- Doors are for interior use only.
- Doors hung in carbon steel frame. All exposed surfaces of frame to receive one coat of rust inhibitive prime paint.
- Maximum door leaf size is 4'-0" x 10'-0" for a 8'-0" x 10'-0" maximum opening size.
- Door weight is 11 pounds / sq. foot.
- Doors recommended to be hung on 5" heavy weight or continuous hinges. Locks required to be BHMA Grade 1, 2, or 3. Electrical hardware with raceways available. Consult factory for specifics.
- MDO and veneer faces available in unfinished, primed, clear, or custom stains. Plastic laminates also available.
- Pairs of UL 752 bullet resistant doors must be equipped with an overlapping astragal by Overly with same rating as door and frame.
- Doors equipped with factory glazed UL Level 2, 4-ply polycarbonate laminate with metal glazing system. 8" minimum stile, 6" minimum top rail. 12" minimum bottom rail. 3-1/2" minimum distance between light and lock.

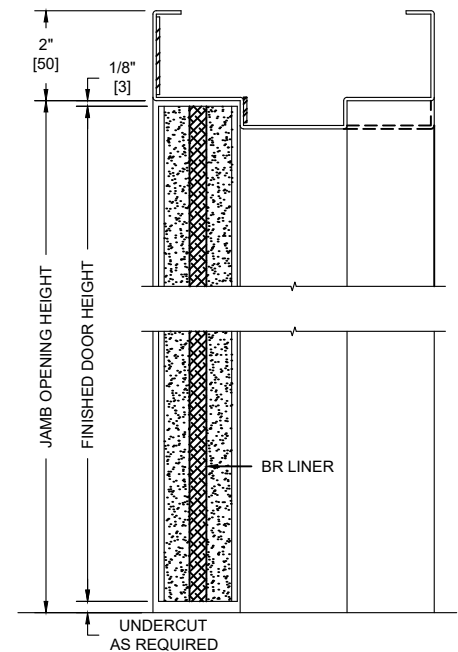
SECURE AREA (INTERIOR)



(KEY) SIDE
PUBLIC AREA (EXTERIOR)



HORIZONTAL SECTION



VERTICAL SECTION

| UL LEVEL | AMMUNITION | MINIMUM VELOCITY FPS/MP5 | NUMBER OF SHOTS |
|----------|--------------------------------------|-----------------------------|--------------------|
| 2 | .357 MAGNUM JACKETED LEAD SOFT POINT | 1250 / 381 | 3 |