

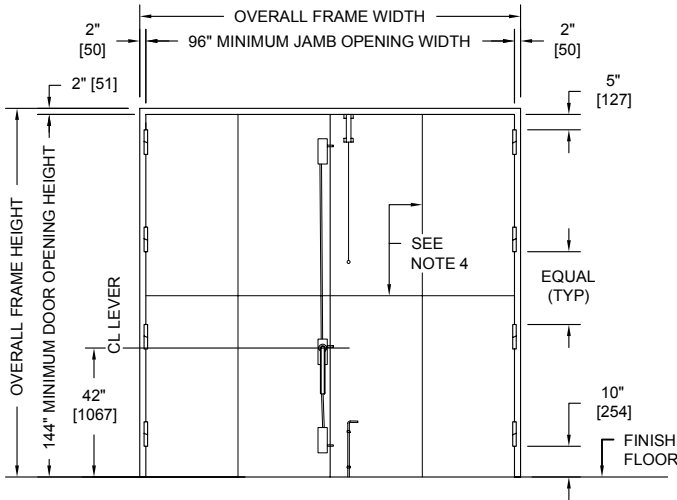
# SERIES

# SC

# OVERLY DOOR COMPANY

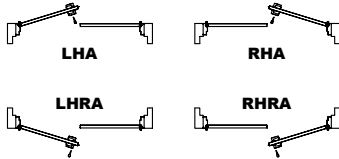
574 WEST OTTERMAN STREET  
POST OFFICE BOX 70  
GREENSBURG, PA 15601-0070  
TELEPHONE: 724-834-7300  
FAX: 724-830-2871

## STC51 OVERSIZE PAIR OF FLUSH SOUND CONTROL DOOR AND FRAME ASSEMBLY / SINGLE COMPRESSION SEALS



**PUBLIC SIDE ELEVATION**  
RIGHT HAND REVERSE BEVEL SHOWN

### SECURE AREA (INTERIOR)

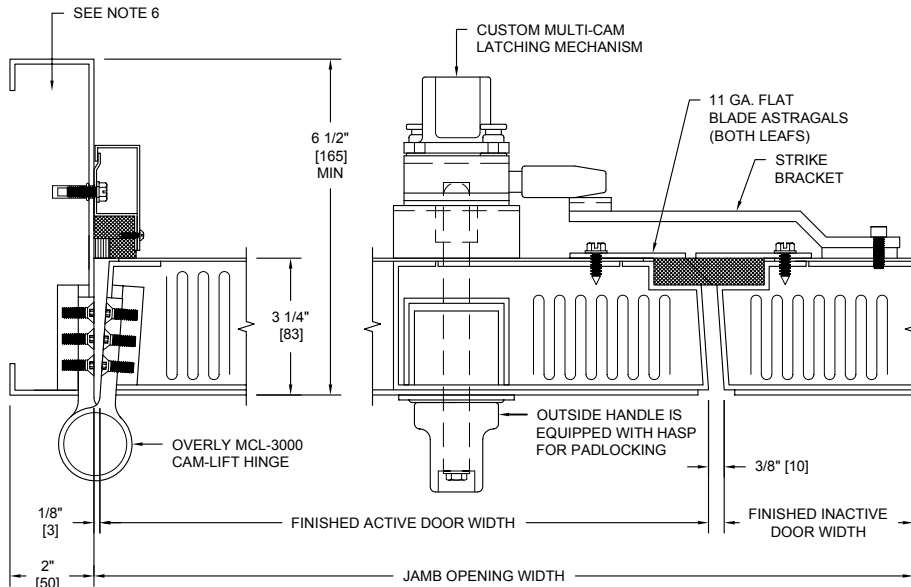


### (KEY) SIDE

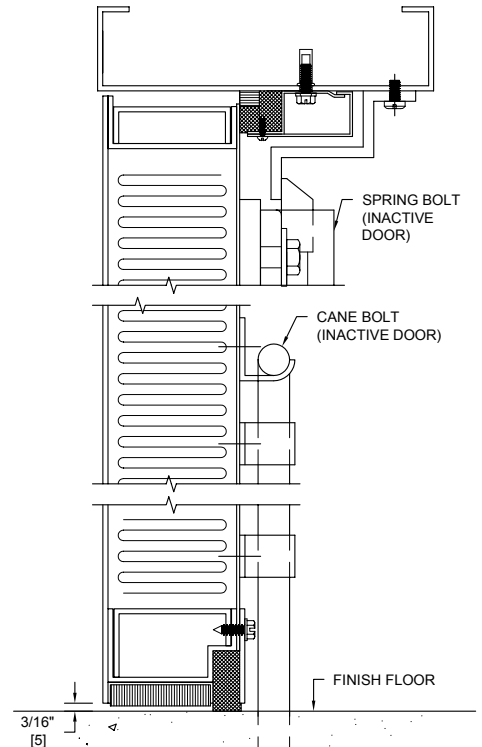
### PUBLIC AREA (EXTERIOR)

### NOTES:

1. All exposed surfaces of door and frame to receive one coat of rust inhibitive prime paint.
2. Door bottom requires flush level sealing surface. Wood, aluminum, or stainless steel threshold recommended. Do not seal against carpet.
3. Frame is equipped with Overly Single "H" compression seals at head and jambs. Door is equipped with a semi-mortised steel astragal at the meeting stile and an Overly super "H" door bottom.
4. Depending on size, door faces may contain vertical and/or horizontal spllices. This is due to limitations on sheet steel size. Number and type of splice based on door size.
5. Door is equipped with custom multi-point cam latching device on the active leaf. Number of latching points is based on door height. The inactive leaf is equipped with a spring bolt at the head and cane bolt at the bottom. Latching device is equipped with a safety release pin on the inside of the opening and a hasp for locking with a padlock on the exterior. Hardware can be mounted on either side of opening.
6. Frames equipped with masonry anchors must be grouted full in field. Bolt-in type frames must have all voids in head and jambs packed with 6 to 12 pound density mineral wool and all voids between wall and frame continuously caulked.
7. STC performance based on Overly model STC5192149, single swing configuration. No acoustical test reports are available for pair configuration.



**HORIZONTAL SECTION**



**VERTICAL SECTION**

ALL DIMENSIONS  
BOTH IN INCHES  
AND MILLIMETERS