

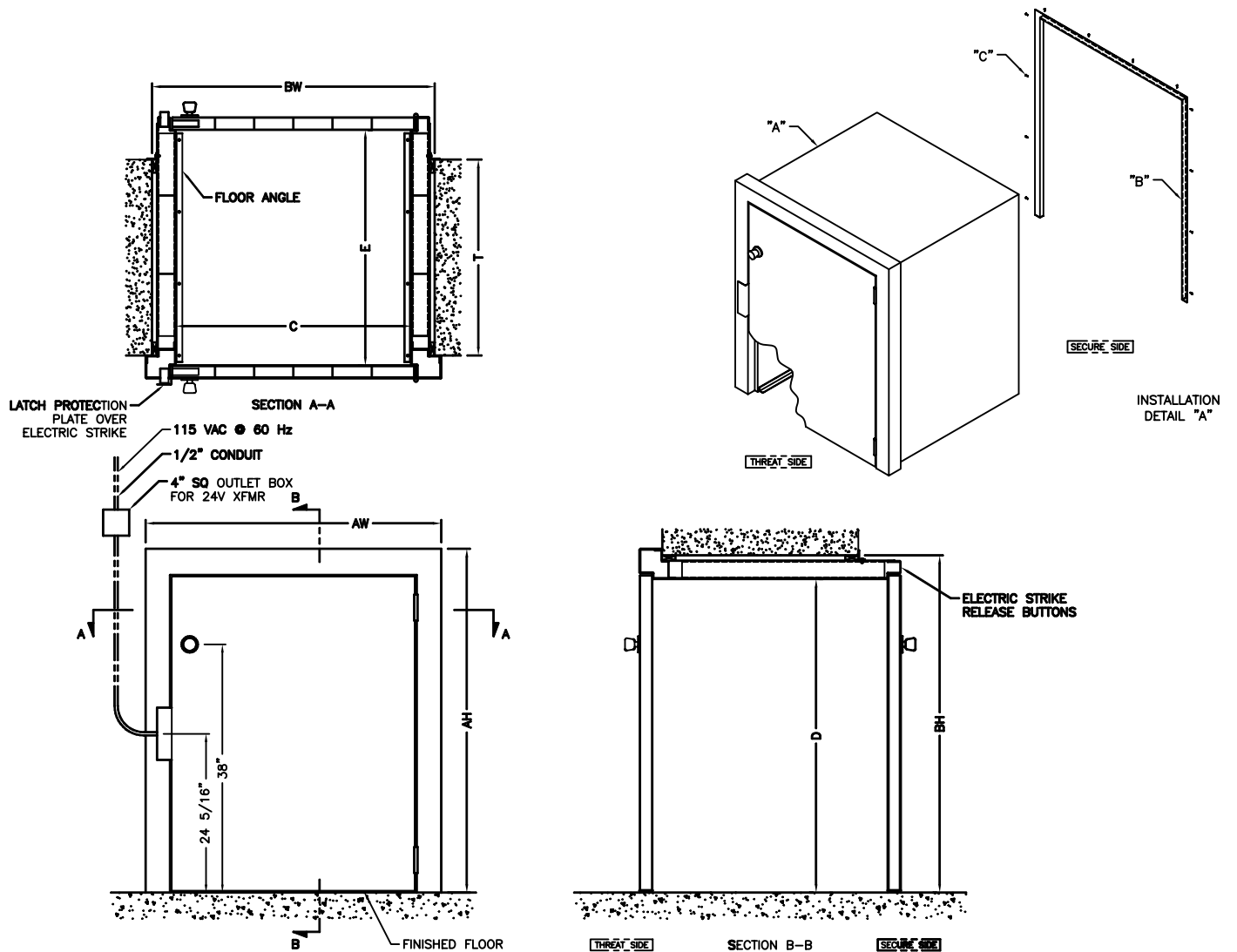
**NOTES:**

- 1) MODEL MCPT CLAMP—ON ARMORED MONEY CART PASS THROUGH
- 2) UL LEVEL 1-4 B/R RATING AVAILABLE
- 3) BULLET RESISTANT ACCORDING TO *UL752*
- 4) PRIME COATED STEEL STANDARD, STAINLESS STEEL COMPONENTS OPTIONAL
- 5) DWG DEMONSTRATES A RHRB DOOR CONFIGURATION ON THE THREAT SIDE AND A LHRB DOOR ON THE SECURE SIDE (AS VIEWED FACING INTERIOR OF PASS THROUGH). SEE DWG MSC-001 FOR SWING DETAILS
- 6) CHART 1 BELOW DEMONSTRATES THE RELEVANT DIMENSIONS FOR A STANDARD UNIT. THE "M" IN THE MODEL NUMBER RELATES TO A LEVEL 1 B/R RATING. IF A HIGHER BULLET RESISTIVE RATING IS REQUIRED, SUBSTITUTE H,S, OR R FOR LEVELS 2-4 RESPECTIVELY.

CHART 1		
MODEL NO.	MCPT.M.4552	
FLANGE	AW	45-1/4"
	AH	52-5/8"
WALL OPENING	BW	43-1/4"
	BH	51-5/8"
MAX PACKAGE SIZE	C	36"
	D	48"
	E	36"
MAX WALL THK	T	30"

**INSTALLATION: (SEE DETAIL A)**

- 1) SLIP OFF INTERIOR CLAMPING FLANGE ITEM "B"
- 2) INSERT PASS THRU "A" INTO PREPARED OPENING FROM THE EXTERIOR (THREAT SIDE)
- 3) SQUARE UP UNIT, MAKING SURE BOTH DOORS ARE OPERABLE. MATCH MARK FLOOR WITH FLOOR ANGLE MOUNTING HOLES
- 4) REMOVE UNIT AND DRILL FLOOR FOR ANCHOR SHIELDS. REINSTALL UNIT AND SECURE TO FLOOR WITH PROVIDED ANCHOR BOLTS
- 5) INSTALL INTERIOR CLAMPING FLANGE "B". HOLDING IT FIRMLY AGAINST THE INTERIOR WALL AND THE OUTSIDE EDGE OF THE UNIT, MATCH MARK THE EXTERIOR WALL OF THE CART PASS WITH THE HOLES PROVIDED IN THE CLAMP FRAME.
- 6) DRILL & TAP #8-32 HOLES THRU OUTSIDE SKIN OF CART PASS THROUGH. INSTALL INTERIOR CLAMP FRAME W/ #8-32 x 1/2" LONG TRUSS HEAD MACHINE SCREWS (ITEM "C") PROVIDED
- 7) COMPLETE ELECTRICAL WIRING CONNECTIONS AND HARDWARE INSTALLATIONS
- 8) CAULK BOTH SIDES OF UNIT FOR WEATHER TIGHTNESS AND APPEARANCE



**NOTICE**

THIS DRAWING AND DESIGN ARE THE PROPERTY OF THE OVERLY DOOR COMPANY. THIS DRAWING IS LOANED TO YOU SUBJECT TO THE CONDITION THAT IT SHALL NOT BE REPRODUCED, COPIED, LOANED OR OTHERWISE DISPOSED OF DIRECTLY OR INDIRECTLY. IT SHALL NOT BE USED TO FURNISH ANY INFORMATION FOR THE MAKING OF DRAWINGS, PRINTS OR APPARATUS, OR PARTS THEREOF, EXCEPT WHERE OTHERWISE SPECIFICALLY PROVIDED FOR BY CONTRACT AGREEMENT WITH THE OVERLY DOOR COMPANY.

**MCPT Series Bullet Resistive  
Clamp-On Armored Money  
Cart Pass Through**



574 West Otterman Street  
Greensburg, PA 15601  
Phone: 800-979-7300  
Fax: 724-830-2871  
Email: [overly@overly.com](mailto:overly@overly.com)

DO NOT SCALE DRAWING

DRAWN BY/DATE:	JMC 12/05/2004
CONTROL NUMBER:	DET-152
FILENAME:	cut-mcpt.dwg