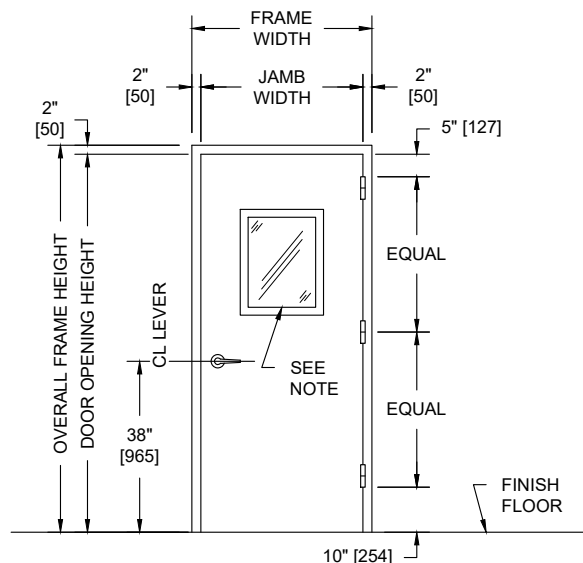
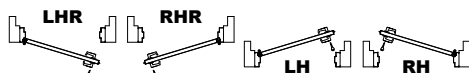


**MODEL NO. 4425196 / NON-FIRE RATED / STC 44 / UL LEVEL 3 BULLET
RESISTANT SINGLE GLAZED SOUND CONTROL
DOOR AND FRAME ASSEMBLY / ENHANCED MAGNETIC GASKETS**

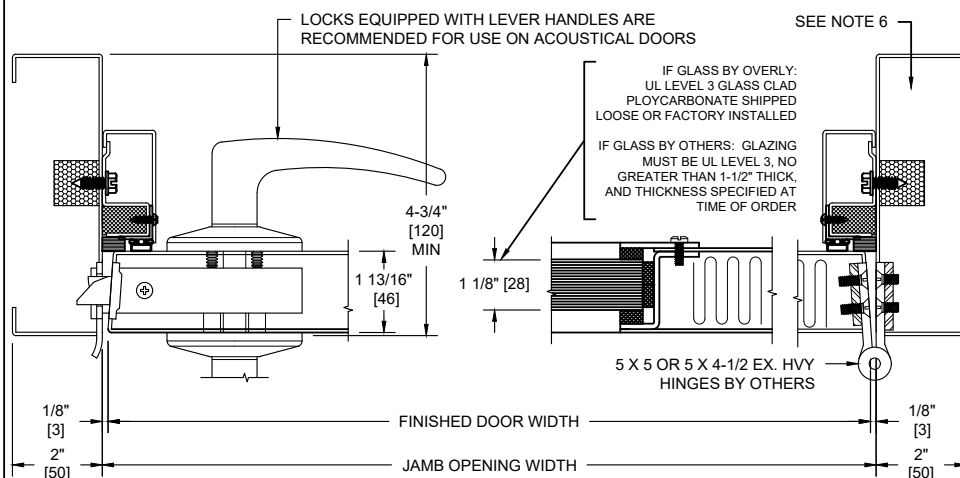


PUBLIC SIDE ELEVATION
RIGHT HAND REVERSE BEVEL SHOWN

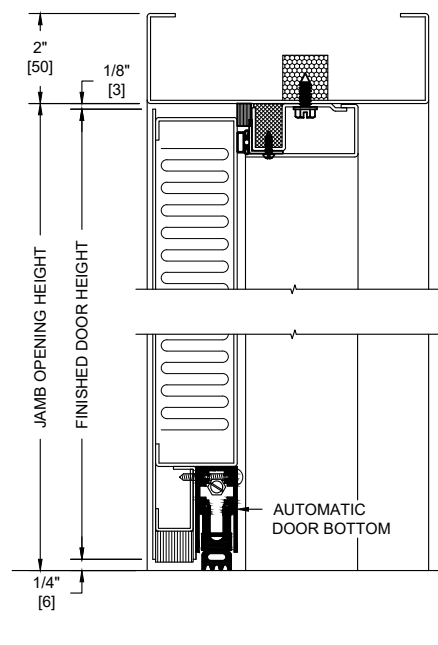
SECURED AREA (INTERIOR)



**(KEY) SIDE
PUBLIC AREA (EXTERIOR)**



HORIZONTAL SECTION



VERTICAL SECTION

NOTES:

1. All exposed surfaces of door and frame to receive one coat of rust inhibitive prime paint.
2. Door bottom requires flush level sealing surface. Wood, aluminum, or stainless steel threshold recommended. Do not seal against carpet.
3. Frame is equipped with Overly enhanced magnetic seals at head and jambs. Door is equipped with an automatic door bottom.
4. Door weight is 12.1 pounds per square foot.
5. Door can be equipped with standard builders hardware, Customer to specify. Concealed hardware is not recommended for acoustical doors.
6. Frames equipped with masonry anchors must be grouted full in field. Bolt-in type frames must have all voids in head and jambs packed with 6 to 12 pound density mineral wool and all voids between wall and frame continuously caulked.
7. UL fire labels are not available.
8. Door tested acoustically with 300 square inch UL level 3 vision light. Customer to specify size.
9. Unit tested as single door at Riverbank Acoustical Laboratories. Results are described in Test Report No. TL25-196 with sound transmission results as shown in chart below.
10. In addition to STC performance as indicated, this unit is also rated to UL level 3 bullet resistance per UL 752 standard.

SOUND TRANSMISSION LOSS IN dB AT FREQUENCY / HERTZ															
100	125	160	200	250	315	400	500	630	800	1000	1250	1600	2000	2500	3150
32	32	32	33	34	35	37	41	45	46	46	45	45	46	50	50
4000	5000														
50	50	50	50												

ALL DIMENSIONS
BOTH IN INCHES
AND MILLIMETERS