

## HIDDEN FASTENERS

### SUPPLEMENTAL BACKFRAME INSTALLATION INSTRUCTION FOR SPLIT FRAME ACOUSTICAL DOORS

NOTE: These instructions are to be used in addition to the standard installation instructions for the type/model of Overly Acoustical Door supplied, and the approved submittal drawings for your order.

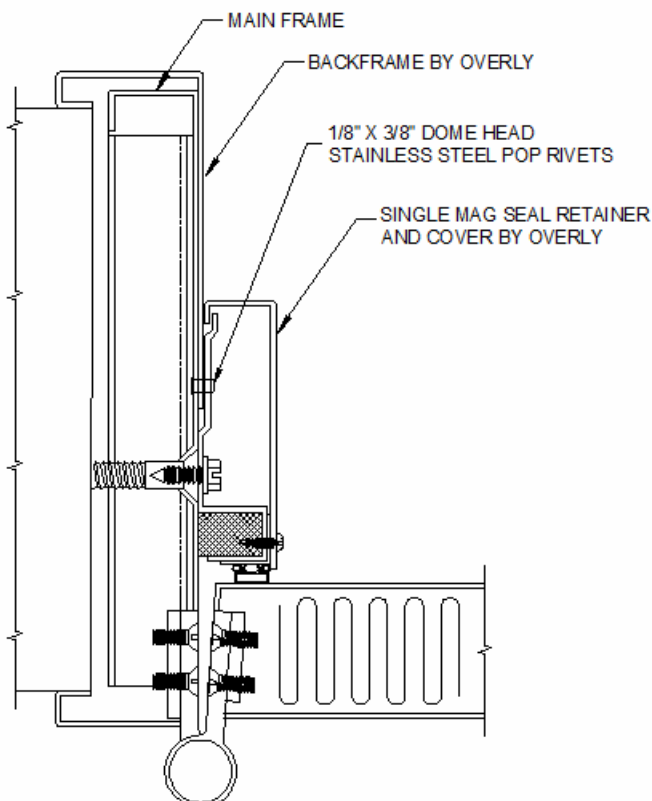
Install the main frame for the opening per the standard installation instruction provided.  
Install acoustical door(s) as required per supplied installation instructions.  
Install and adjust the acoustical gasketing, if required.

Locate the **Backframe Welded Assembly**, shipped with the main frame, for the opening, and 1/8" x 3/8" lg stainless steel dome head pop rivet (or other fasteners listed on the approved submittal drawings).

Orientate the Backframe Welded Assembly to slide against the main frame and wrap the wall as shown on the approved submittal drawings for your order. Slide the backframe assembly toward the door until the backframe assembly is bottomed-out against the wall.

With the retainer covers removed, locate the square holes in the retainer angles. The factory pre-punched fastener hole should be visible through the square hole. With the backframe assembly held tight against the wall match drill through the mainframe using the pre-punched holes as a guide, use a #30 (1/8") drill bit to prepare the hole for the pop-rivet. Insert the provided pop-rivets into the holes and secure.

Replace acoustical retainer covers.



**Typical Backframe Detail**  
However refer to the APPROVED  
SUBMITTAL DRAWINGS for your order  
for specific main frame/backframe  
arrangements