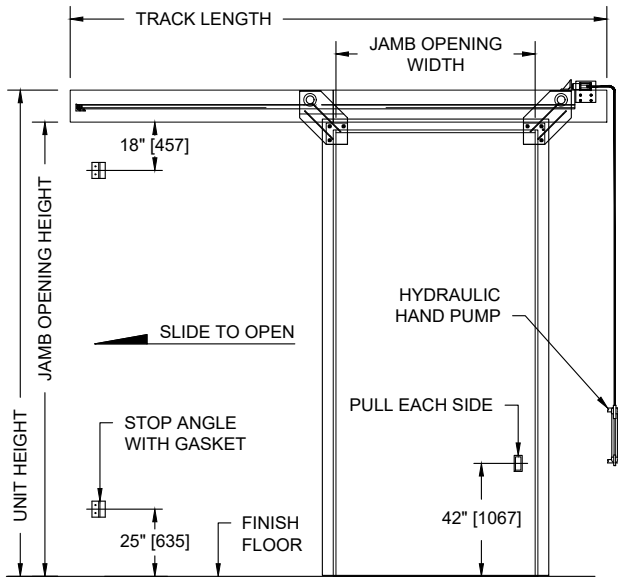


MODEL NO. 5185102 / UL FIRE RATED / STC 51 / FLUSH SLIDING SOUND CONTROL DOOR AND FRAME ASSEMBLY / COMPRESSION SEALS



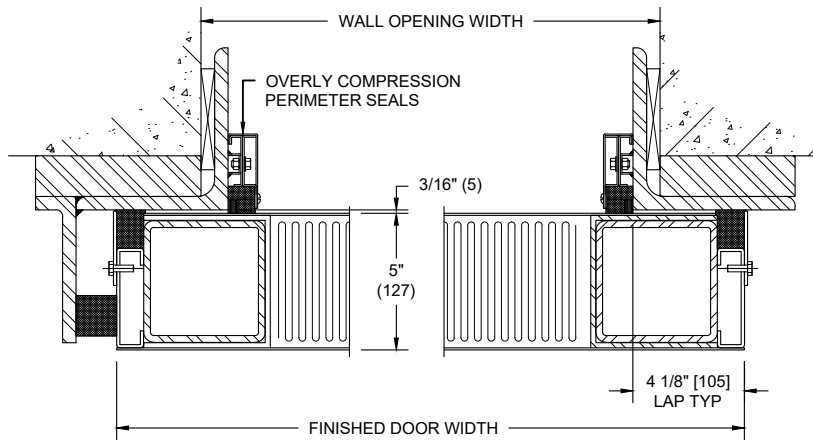
PUBLIC SIDE ELEVATION

LEFT HAND SLIDE SHOWN
(DOOR SHOWN IN CLOSED POSITION)

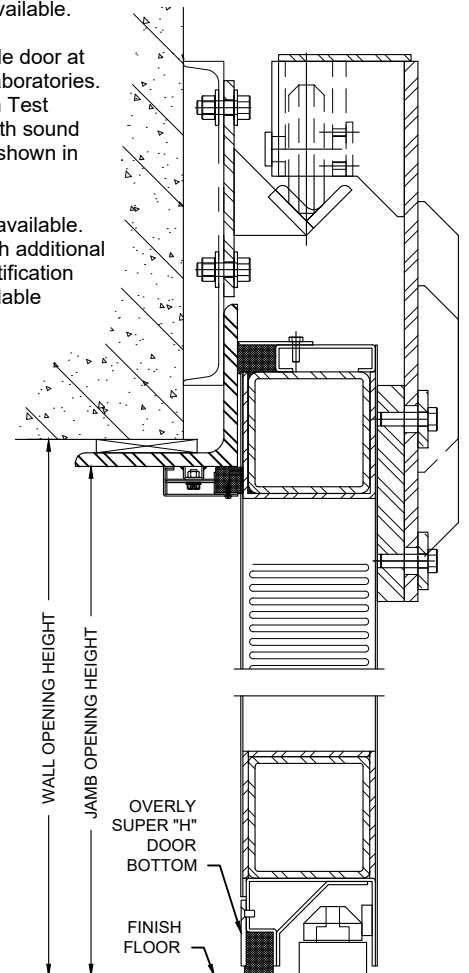
SECURED AREA (INTERIOR)



PUBLIC AREA (EXTERIOR)



HORIZONTAL SECTION



VERTICAL SECTION

NOTES:

1. All exposed surfaces of door and frame to receive one coat of rust inhibitive prime paint.
2. Door bottom requires flush level sealing surface. Wood, aluminum, or stainless steel threshold recommended. Do not seal against carpet.
3. Cam-in hangers simultaneously drops door in and down when it reaches a fully closed position to provide a seal at head, jambs, and top of floor.
4. Manually operated hydraulic unseating device is provided on door side of opening as standard. Available upon both sides upon request.
5. Door weight is 34.3 pounds per square foot.
6. Door construction utilizes vertical and/or horizontal splices. The number and location varies with the size of the door.
7. UL fire ratings are not available.
8. Unit tested as single slide door at Riverbank Acoustical Laboratories. Results are described in Test Report No. TL85-102 with sound transmission results as shown in the chart below.
9. Bi-parting sliding doors available. Meeting stile is fitted with additional gaskets. Acoustical certification test reports are not available for bi-parting units.

SOUND TRANSMISSION LOSS IN dB AT FREQUENCY / HERTZ

100	125	160	200	250	315	400	500	630	800	1000	1250	1600	2000	2500	3150	4000	5000
39	44	46	43	48	49	54	56	58	58	59	60	63	66	68	70	70	66

ALL DIMENSIONS
BOTH IN INCHES
AND MILLIMETERS