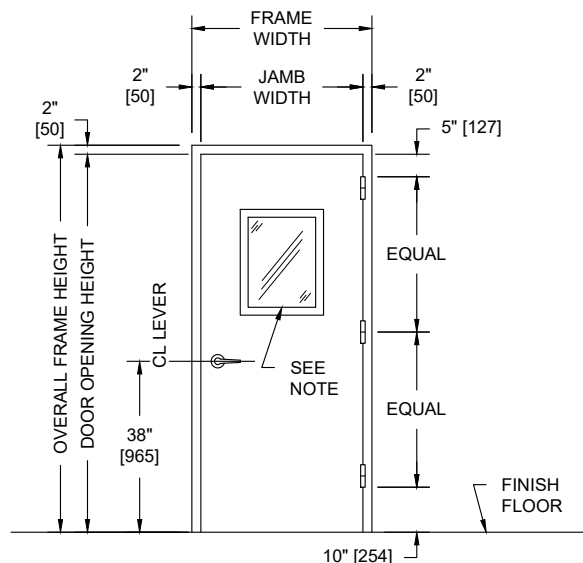
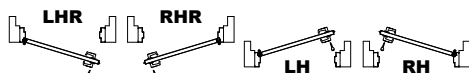


**MODEL NO. 4325198 / NON-FIRE RATED / STC 43 / UL LEVEL 3 BULLET  
RESISTANT SINGLE GLAZED SOUND CONTROL  
DOOR AND FRAME ASSEMBLY / ENHANCED MAGNETIC GASKETS**



**PUBLIC SIDE ELEVATION**  
RIGHT HAND REVERSE BEVEL SHOWN

**SECURED AREA (INTERIOR)**

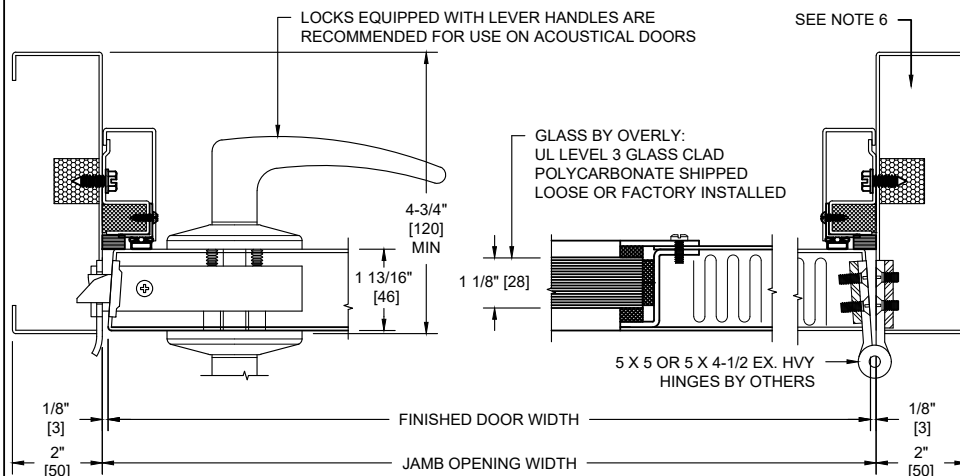


**(KEY) SIDE**

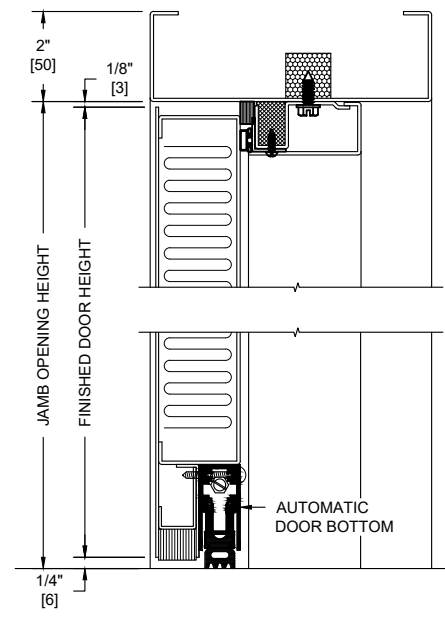
**PUBLIC AREA (EXTERIOR)**

**NOTES:**

1. All exposed surfaces of door and frame to receive one coat of rust inhibitive prime paint.
2. Door bottom requires flush level sealing surface. Wood, aluminum, or stainless steel threshold recommended. Do not seal against carpet.
3. Frame is equipped with Overly enhanced magnetic seals at head and jambs. Door is equipped with an automatic door bottom.
4. Door weight is 12.5 pounds per square foot.
5. Door can be equipped with standard builders hardware, Customer to specify. Concealed hardware is not recommended for acoustical doors.
6. Frames equipped with masonry anchors must be grouted full in field. Bolt-in type frames must have all voids in head and jambs packed with 6 to 12 pound density mineral wool and all voids between wall and frame continuously caulked.
7. UL fire labels are not available.
8. Door tested acoustically with 680 square inch UL level 3 vision light. Customer to specify size.
9. Unit tested as single door at Riverbank Acoustical Laboratories. Results are described in Test Report No. TL25-198 with sound transmission results as shown in chart below.
10. In addition to STC performance as indicated, this unit is also rated to UL level 3 bullet resistance per UL 752 standard.



**HORIZONTAL SECTION**



**VERTICAL SECTION**

SOUND TRANSMISSION LOSS IN dB AT FREQUENCY / HERTZ															
100	125	160	200	250	315	400	500	630	800	1000	1250	1600	2000	2500	3150
32	32	32	32	35	37	39	39	44	44	44	43	44	46	49	49
														48	47

ALL DIMENSIONS  
BOTH IN INCHES  
AND MILLIMETERS