

OVERLY

DOOR COMPANY

Installation Instructions for ED6600 Modified Exit Device Replacement

Remove Existing Exit Device

- 1) Remove cover screw at bottom of both ends of exit device and remove covers.



- 2) Remove (4) #10-24 Flat Head Device Mounting Screws from each end of existing device and remove old device.



Install New Device Mounting Plate

- 1) Using the (8) #10-24 x 1/2" or (8) #12-24 x 1/2" Stainless Steel Flat Head Machine Screws provided, mount the two 1/4" thick stainless steel new device mounting plates using the existing old device mounting holes.



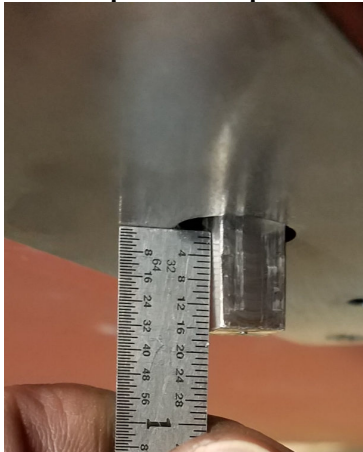
Note: Ensure that the new device mounting holes are position as shown at left when installing mounting plates.

- 2) Using a straight edge or level. Ensure that the mounting plates are straight in line. If they are not, you may be required to shift the plate at the dummy end left or right and re-drill and tap for the 10-24 mounting screws.



It is not important for them to be level but it is important that they are straight and parallel.

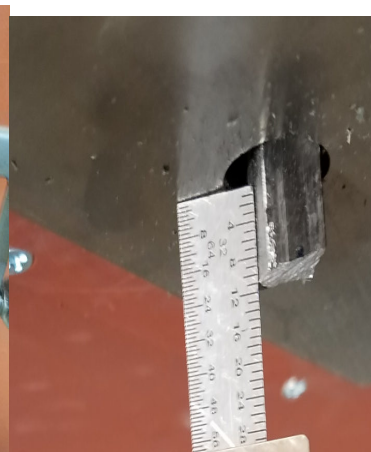
- 3) Measure the length of the operating spindle extending past the new mounting plate. The length should be between 1/4" - 3/8". Although longer is better, do not exceed 3/8" maximum. Cut spindle as required to the 3/8" maximum length.



Spindle is too long.



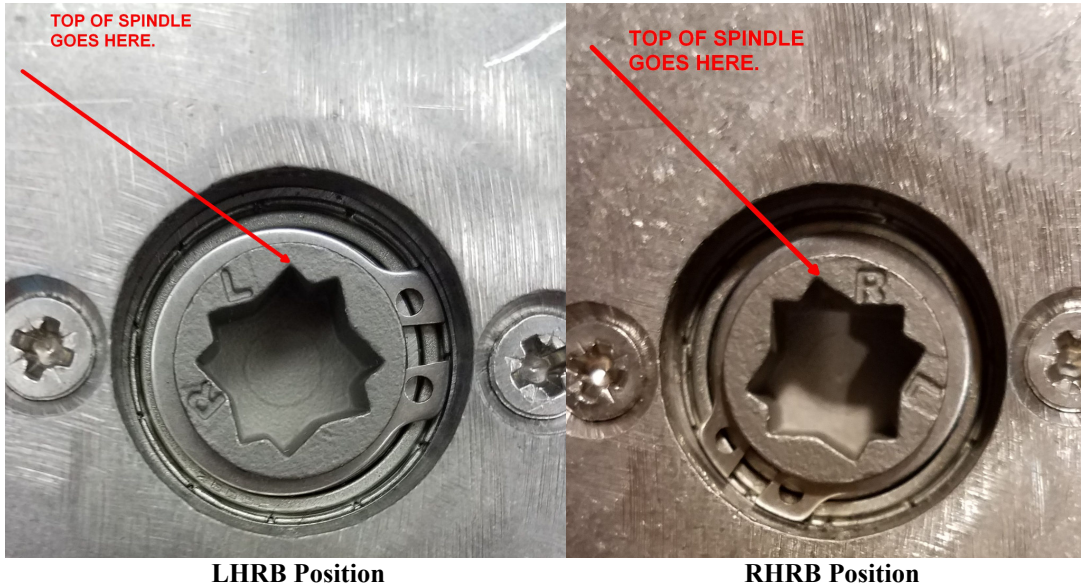
Mark and cut spindle.



Spindle between 1/4" -3/8".

Install New Exit Device

- 1) **IMPORTANT:** This panic device can be used on either hand door. Make sure that you engage the spindle with the exit device spindle keeper as shown in the picture below based on the hand of you door.



This starting point is very important to ensure that you get full range of motion from the panic bar and retract the latch/latches completely. To change the position from LHRB to RHRB place your finger over the cam from this side and rotate until it stops.

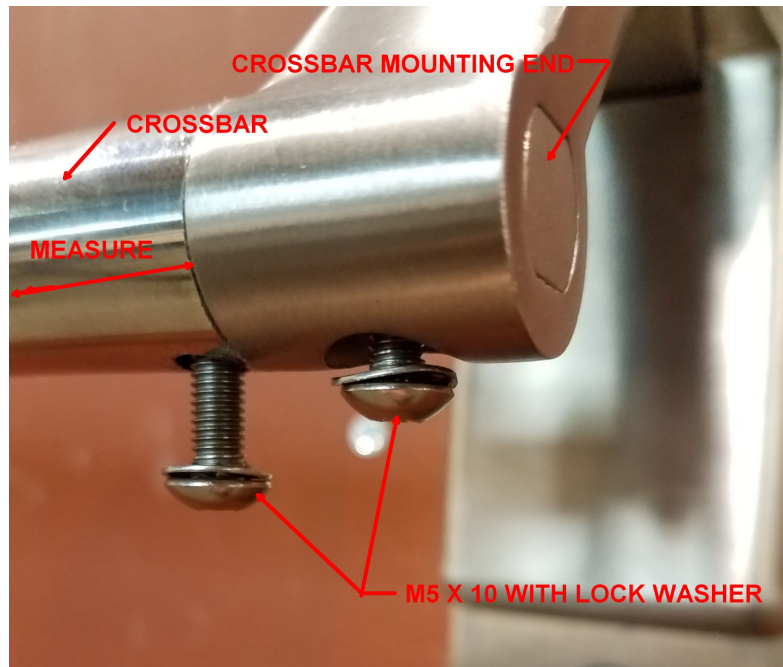


Note: To properly align the spindle keeper shown above with top point of the spindle, you can rotate the top of the device toward the hinge edge as shown on the picture at the left.

- 2) Attach both ends of new device to mounting plates with the 5/16-18 x 3/8" Stainless Steel Undercut Flat Head Machine Screws provided. Make sure that you configure the spindle keeper as shown in step one above as you install the active end of the device. Hold the Active End Case and operate the lever after installation to ensure the latch/latches retract fully. Install both screws. Install Inactive End of device in the same manner.



- 3) Install both cross bar mounting ends pointing toward center with two M5 x 10 screws with toothed lock washers. Tighten with 3 mm hex allen wrench provided.

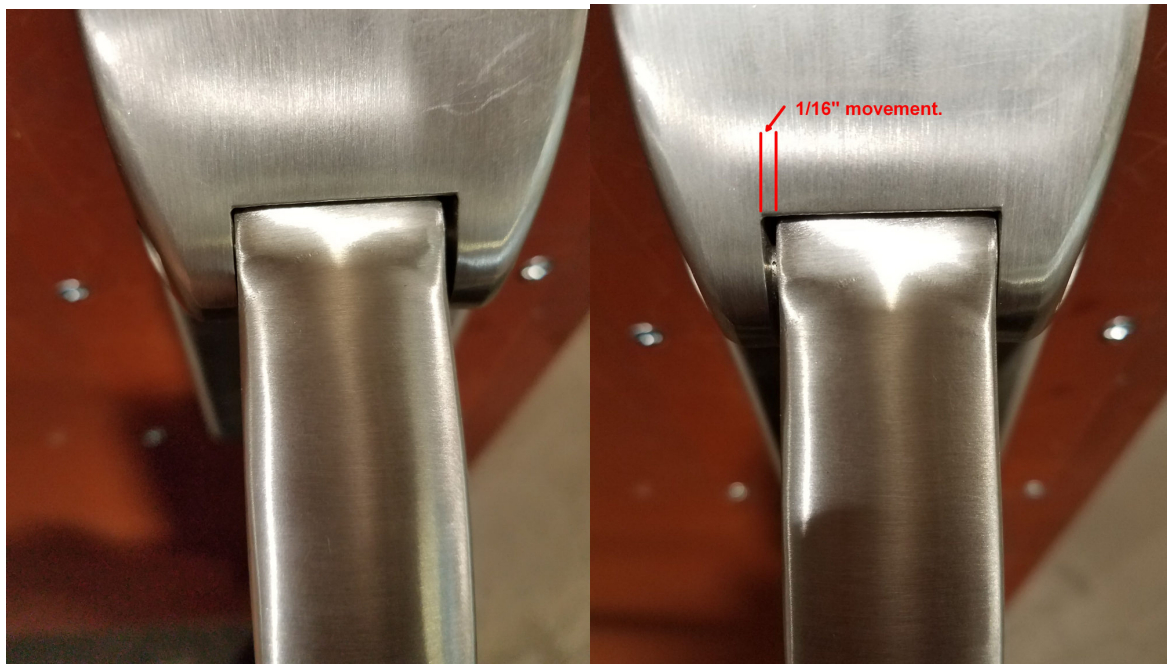


- 4) Measure space between the Crossbar Supports at crossbar location. Make sure the Crossbar Supports arms are centered in their respective housing. Do not push them apart or pull them together when you measure the space between.
Calculate the length of the crossbar using the following formula:
 $(\text{Space between Crossbar Support Arms}) - 1/16'' = \text{Crossbar Length}$

- 5) **Mark the length on the crossbar for cutting. Before you cut the crossbar, use a square to transfer the center of the hole located at end of the bar to a point 3/16" past the new length mark. This hole must be in line with the hole at the other end of the bar for proper installation and smooth operation.**
- 6) **Cut the Crossbar to the length marked. Debur the rough end.**
- 7) **Center punch and drill a 7/32" diameter clearance hole in the crossbar where marked. Debur the hole.**
- 8) **Remove dummy end of device from mounting plate.**
- 9) **Install the crossbar by sliding it on both crossbar mounting ends while reinstalling the dummy end of the device to the mounting plate.**
- 10) **Secure crossbar to both mounting ends using the M5 x 10 screws with toothed lock washers.**

Check Operation of Panic Device

- 1) **The panic bar should operate freely without any undue resistance. If necessary trim the length of the tube or open up the diameter on the crossbar mounting holes in the tube. When fit correctly, the crossbar assembly should be able to slide back and forth approximately 1/16" at the pivot points.**



Pictures at left show same end with 1/16" movement in bar assembly.

- 2) **Operate device and ensure that latches are retracted far enough to clear strike and open door.**