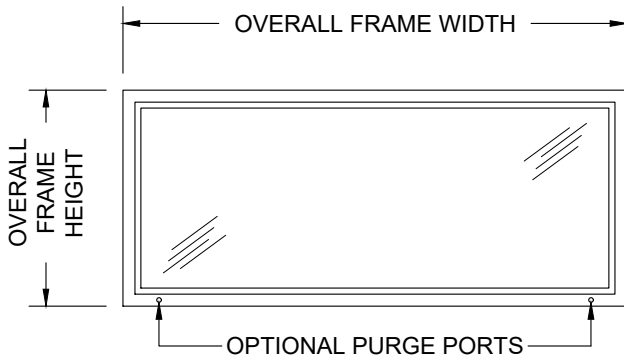


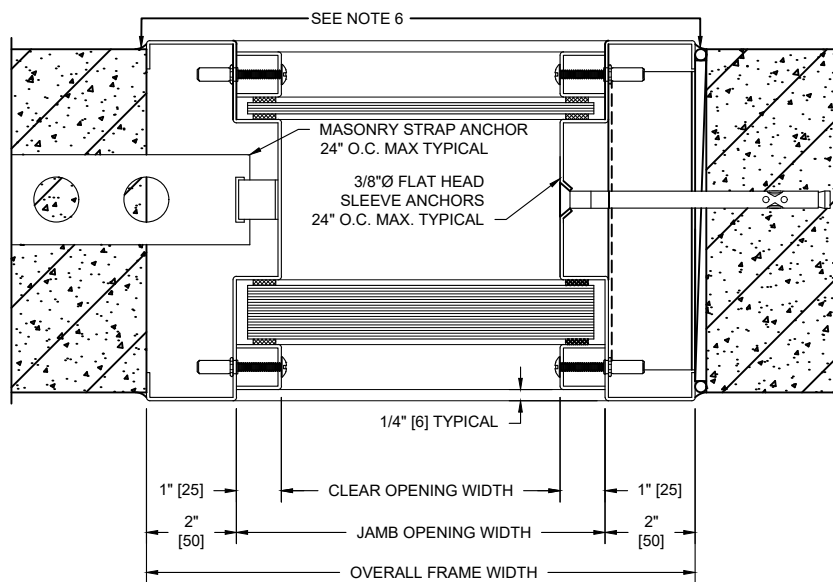
**MODEL NO. 559511 / STC 55 / DUAL GLAZED UL LEVEL 1 BULLET-RESISTIVE
SOUND CONTROL FIXED WINDOW ASSEMBLY / NEOPRENE GLAZING**



ELEVATION

NOTES:

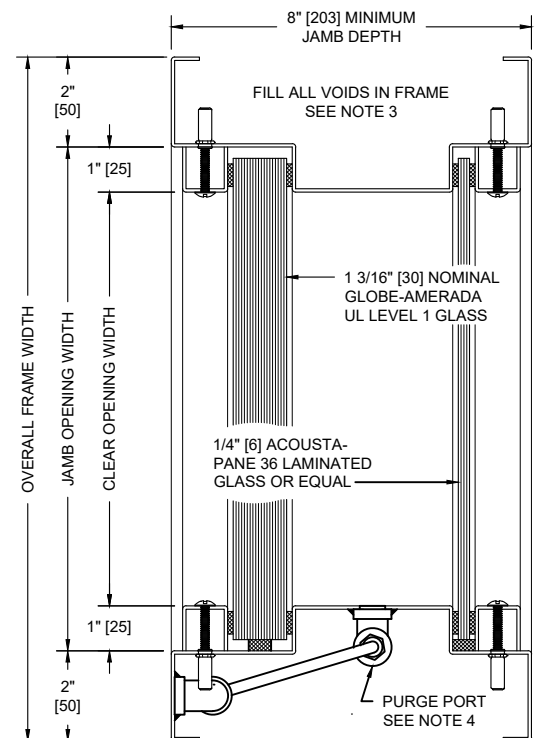
1. All exposed surfaces of frame to receive one coat of rust inhibitive prime paint.
2. Unit weight, including frame, glass, and glazing, is 23.6 pounds per square foot.
3. Frames equipped with masonry anchors must be grouted full in field. Bolt-in type frames must have all voids in head, jambs, and sill packed with 6 to 12 pound density mineral wool.
4. Unit may be provided with two (2) optional purge ports.
5. Unit is glazed with one piece 1 3/16" nominal Globe-Amerada UL Level 1 (MPSA) glass as tested to UL Standard for Safety 752 and one piece 1/4" Acoustapane 36 laminated glass.
6. All voids between wall and frame must be continuously caulked.



SHOWING BUILT-IN INSTALLATION
IN MASONRY PARTITION

SHOWING BOLT-IN INSTALLATION
IN MASONRY PARTITION

HORIZONTAL SECTION



VERTICAL SECTION

SOUND TRANSMISSION LOSS IN dB AT FREQUENCY / HERTZ																	
100	125	160	200	250	315	400	500	630	800	1000	1250	1600	2000	2500	3150	4000	5000
32	42	41	41	46	43	46	48	55	61	63	66	67	69	73	75	79	79

ALL DIMENSIONS
BOTH IN INCHES
AND MILLIMETERS