

SERIES

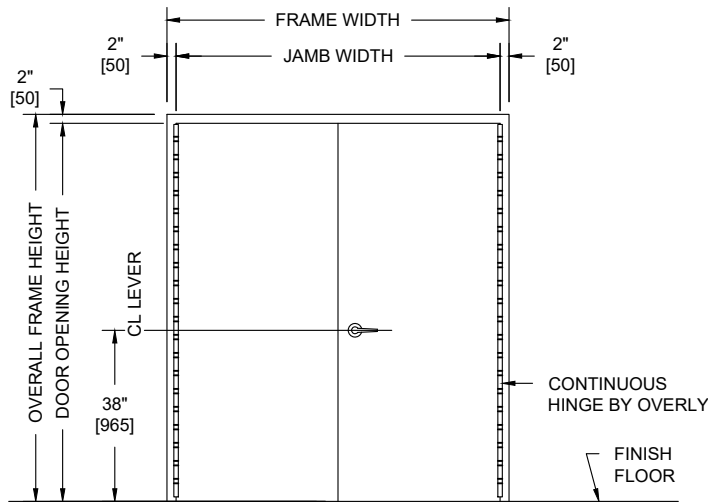
BRM

OVERLY

DOOR COMPANY

574 WEST OTTERMAN STREET
 POST OFFICE BOX 70
 GREENSBURG, PA 15601-0070
 TELEPHONE: 724-834-7300
 FAX: 724-830-2871

UL752 LEVEL 4, FLUSH, UP TO 3 HOUR FIRE RATED PAIR WITH METAL FRAME AND DOOR ASSEMBLY



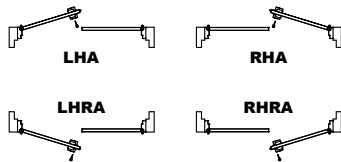
NOTES:

- Both doors, frame and astragal UL listed for UL752, Level 4 bullet resistance.
- Door and Frames can be fabricated from carbon or galvanized steel. All exposed surfaces of frame to receive one coat of rust inhibitive prime paint.
- Units can be UL fire rated up to 3 hours in accordance with UL standard 10C.
- Maximum door leaf size is 4'-0" x 10'-0" for an 8'-0" x 10'-0" maximum opening size.
- Door weight is 19.42 pounds / sq. foot.
- Doors to be hung on continuous hinges by Overly. Locks required to be BHMA Grade 1, 2, or 3. Electrical hardware with raceways available. Consult factory for specifics.
- Pairs of UL 752 bullet resistant doors must be equipped with an overlapping astragal by Overly with same rating as door and frame.

PUBLIC SIDE ELEVATION

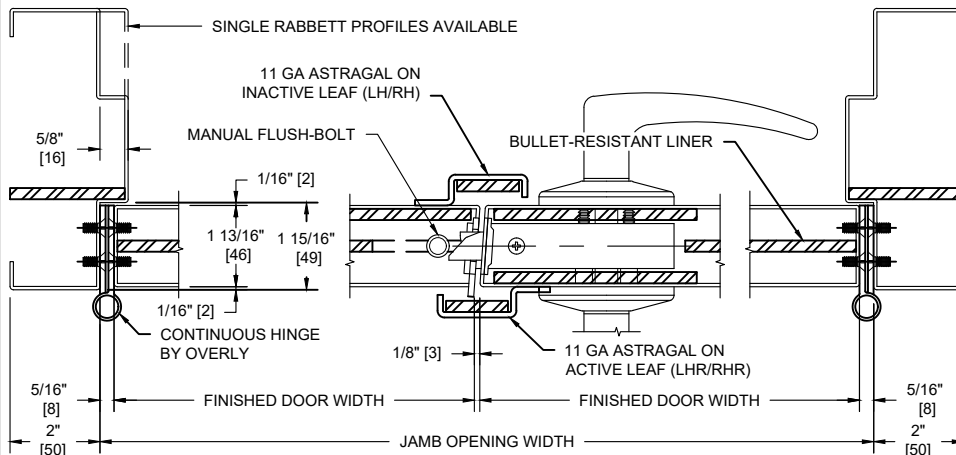
RIGHT HAND REVERSE BEVEL SHOWN

SECURE AREA (INTERIOR)

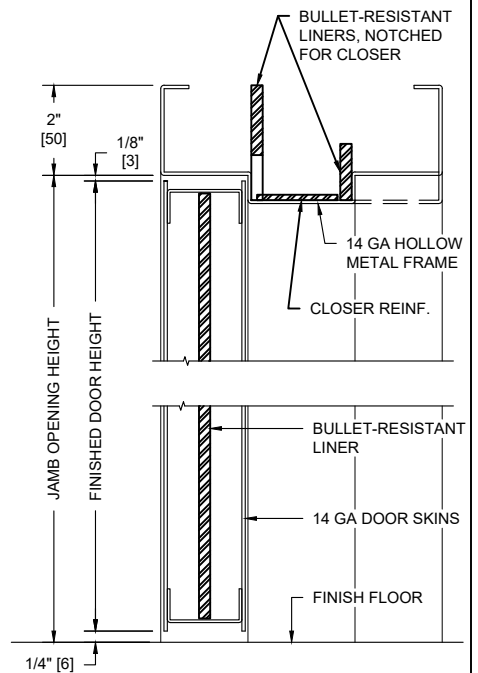


(KEY) SIDE

PUBLIC AREA (EXTERIOR)



HORIZONTAL SECTION



VERTICAL SECTION

| UL LEVEL | AMMUNITION | MINIMUM VELOCITY FPS/MPs | NUMBER OF SHOTS |
|----------|--|-----------------------------|--------------------|
| 4 | .30 CALIBER RIFLE LEAD CORE SOFT POINT | 2540 / 774 | 1 |