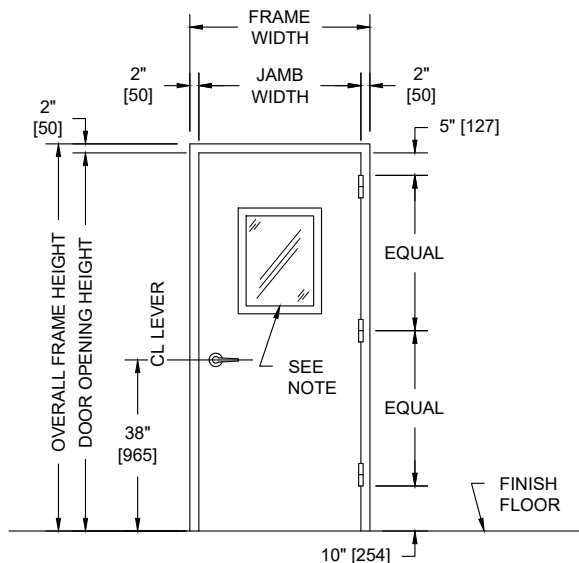
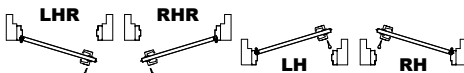


**MODEL NO. 4125192 / NON-FIRE RATED / STC 41 / UL LEVEL 3 BULLET  
RESISTANT SINGLE GLAZED SOUND CONTROL  
DOOR AND FRAME ASSEMBLY / DOUBLE BUBBLE SEALS**

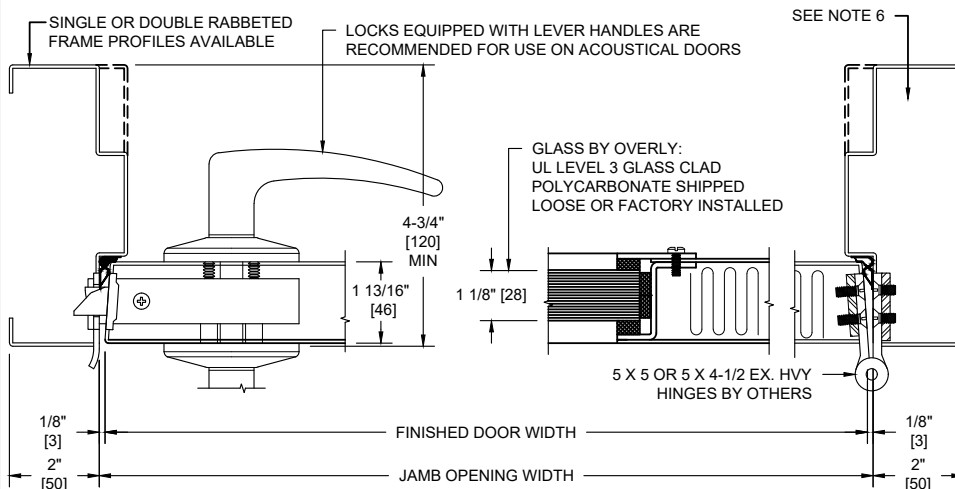


**PUBLIC SIDE ELEVATION**  
RIGHT HAND REVERSE BEVEL SHOWN

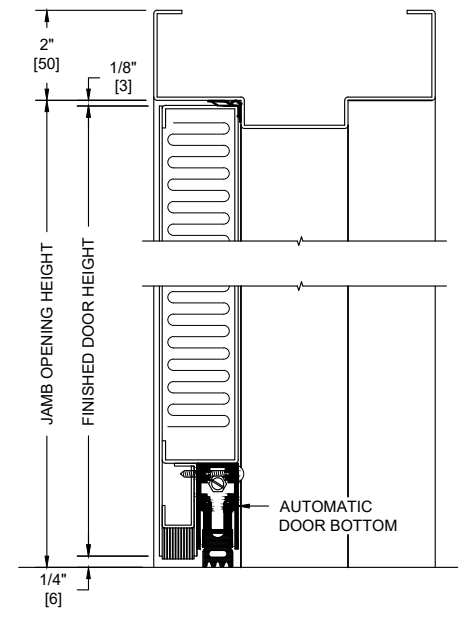
**SECURED AREA (INTERIOR)**



**(KEY) SIDE  
PUBLIC AREA (EXTERIOR)**



**HORIZONTAL SECTION**



**VERTICAL SECTION**

**NOTES:**

1. All exposed surfaces of door and frame to receive one coat of rust inhibitive prime paint.
2. Door bottom requires flush level sealing surface. Wood, aluminum, or stainless steel threshold recommended. Do not seal against carpet.
3. Frame is equipped with Overly double bubble seals at head and jamba. Door is equipped with an automatic door bottom.
4. Door weight is 12.1 pounds per square foot.
5. Door can be equipped with standard builders hardware, customer to specify. Concealed hardware is not recommended for acoustical doors.
6. Frames equipped with masonry anchors must be grouted full in field. Bolt-in type frames must have all voids in head and jamba packed with 6 to 12 pound density mineral wool and all voids between wall and frame continuously caulked.
7. UL fire labels are not available.
8. Door tested acoustically with 300 sq. in. Level 3 vision light. Customer to specify size.
9. Unit tested as single door at Riverbank Acoustical Laboratories. Results are described in Test Report No. TL25-192 with sound transmission results as shown in chart below.
9. In addition to STC performance as indicated, this unit is also rated to UL level 3 bullet resistance per UL 752 standard.

**SOUND TRANSMISSION LOSS IN dB AT FREQUENCY / HERTZ**

100	125	160	200	250	315	400	500	630	800	1000	1250	1600	2000	2500	3150	4000	5000
31	29	30	30	33	34	35	35	37	39	41	43	44	46	50	51	49	47

ALL DIMENSIONS  
BOTH IN INCHES  
AND MILLIMETERS