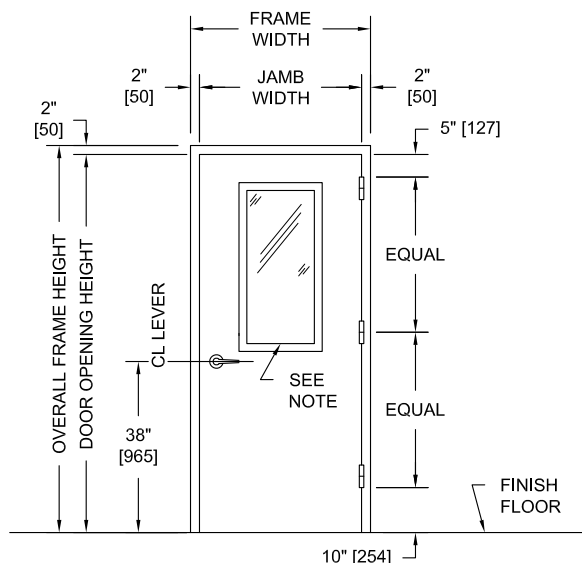
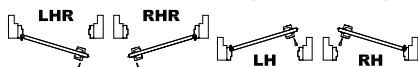


MODEL NO. 4525070 / FIRE RATED / STC 45 / WOOD / SOUND CONTROL DOOR AND FRAME ASSEMBLY / DOUBLE BUBBLE SEALS



PUBLIC SIDE ELEVATION
RIGHT HAND REVERSE BEVEL SHOWN

SECURED AREA (INTERIOR)

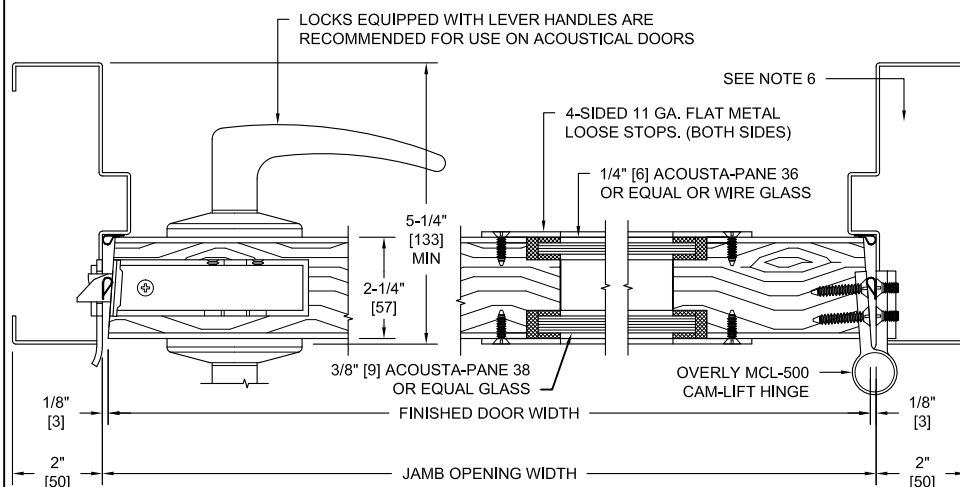


(KEY) SIDE

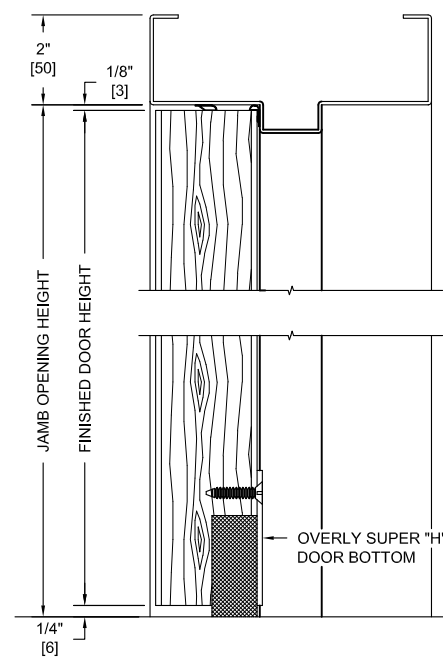
PUBLIC AREA (EXTERIOR)

NOTES:

1. All exposed surfaces of frame to receive one coat of rust inhibitive prime paint.
2. Door bottom requires a flush level sealing surface. Wood, aluminum, or stainless steel thresholds are recommended. Do not seal against carpet.
3. Frame is equipped with Overly Double Bubble seals at head and jambs. Door is equipped with an Overly Super "H" door bottom.
4. Door weight is 13.3 pounds per square foot.
5. Door can be equipped with standard builders hardware for 2-1/4" thick doors. Customer to specify. No concealed hardware is permitted.
6. Frames equipped with masonry anchors must be grouted full in field. Bolt-in type frames must have all voids in head and jambs packed with 6 to 12 pound density mineral wool and all voids between wall and frame continuously caulked.
7. Wood species, cut and finish to be determined by the Architect.
8. Unit tested as single door with a 510 sq. in. metal dual glazed vision light system at Riverbank Acoustical Laboratories. Results are described in Test Report No. TL25-070 with sound transmission results as shown in chart below.
9. Maximum leaf size 4' x 10' available. Up to 4' x 8' single swing units can bear up to 45 min UL 10C fire label with up to a 1,296 sq. in. vision light. Doors swinging in pairs cannot be fire labeled unless provided with a mullion.
10. Door construction is covered by US Patent No. 6,112,496.



HORIZONTAL SECTION



VERTICAL SECTION

SOUND TRANSMISSION LOSS IN dB AT FREQUENCY / HERTZ																
100	125	160	200	250	315	400	500	630	800	1000	1250	1600	2000	2500	3150	4000
33	30	31	35	35	38	41	42	42	44	45	45	47	48	49	49	50

ALL DIMENSIONS
BOTH IN INCHES
AND MILLIMETERS