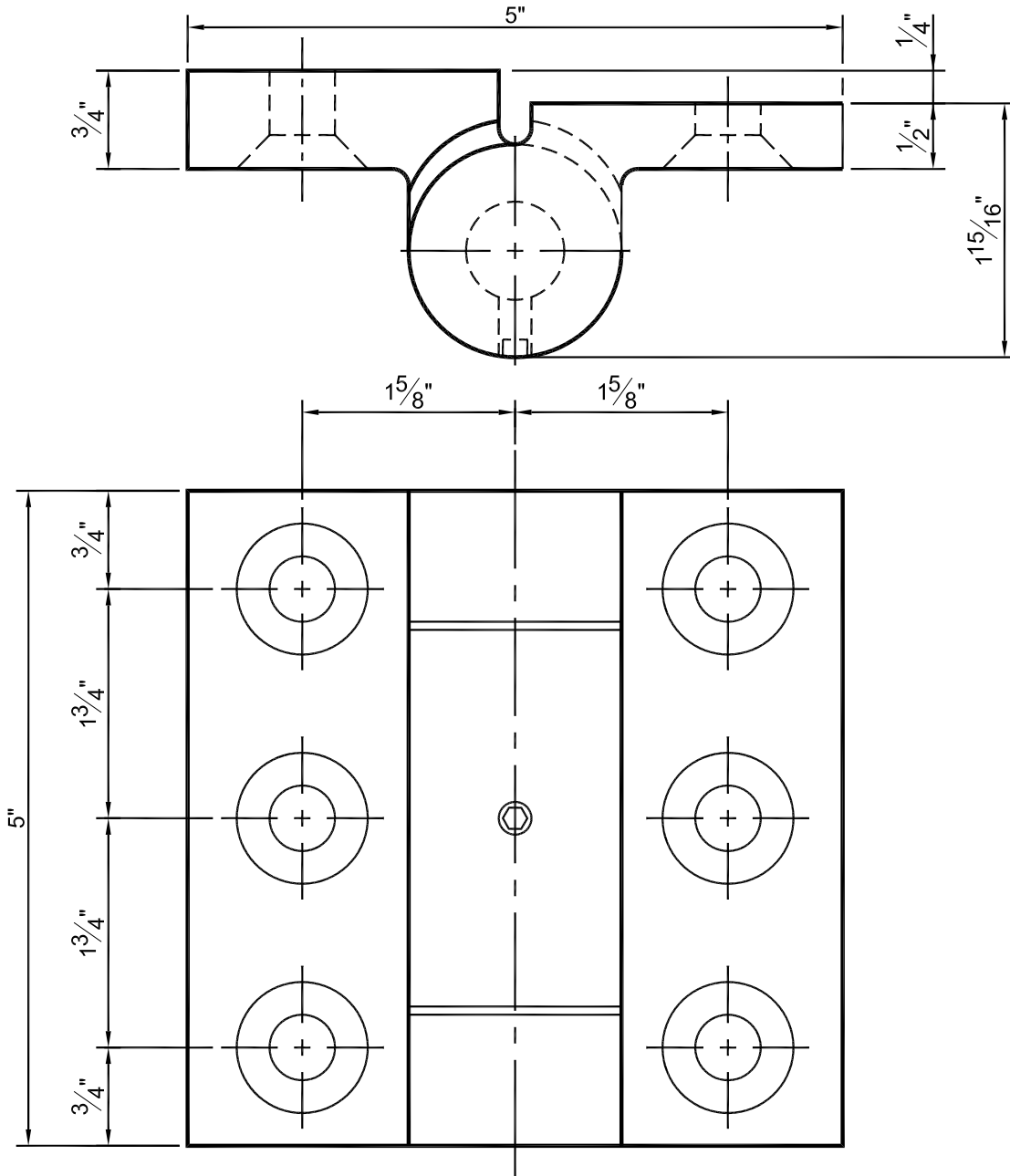


P-800 Hinge Assembly



574 West Otterman Street
Greensburg, PA 15601
Toll Free: (800) 979-7300
Fax: (724) 830-2871
Email: overly@overly.com

Surface Type



Specification

- For Dimensions, see template on this page.
- Precision investment cast steel alloy leaves.
- Radial and thrust bearings.
- Non-removable case hardened $\frac{3}{4}$ " hinge pin.
- Lubricant access port at center of hinge.
- Drilled and countersunk for installation with $\frac{1}{2}$ " \varnothing security screws (specify spanner head or snap off type and length).