

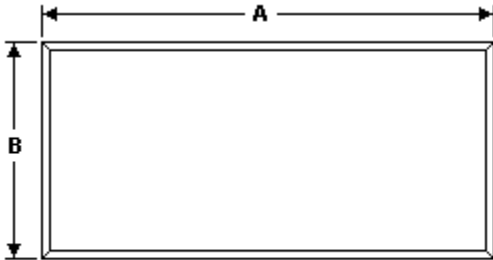
# OVERLY

## DOOR COMPANY

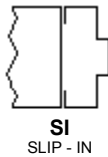
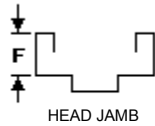
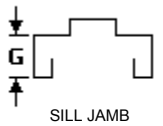
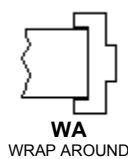
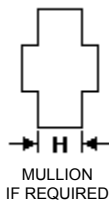
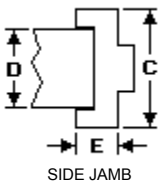
574 WEST OTTERMAN STREET  
 GREENSBURG, PA 15601-0070  
 TELEPHONE: (724) 834-7300  
 FAX: (724) 830-2871

### BULLET RESISTANT WINDOW DATA SHEET

CUSTOMER: \_\_\_\_\_ APPROVED BY: \_\_\_\_\_  
 JOB: \_\_\_\_\_ DATE: \_\_\_\_\_  
 LOCATION: \_\_\_\_\_ SALES ORDER: \_\_\_\_\_ ITEM: \_\_\_\_\_  
 CUSTOMER PO: \_\_\_\_\_ MARK NUMBER 1: \_\_\_\_\_ ADDITIONAL MARKS: \_\_\_\_\_  
 \_\_\_\_\_  
 \_\_\_\_\_  
 \_\_\_\_\_

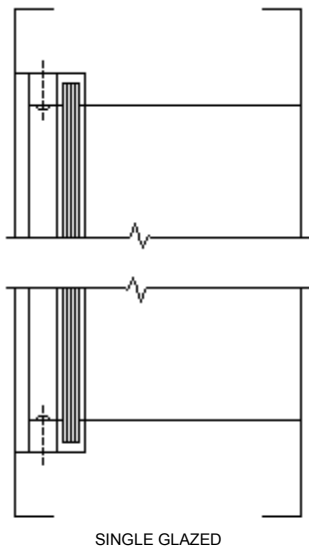


**ELEVATION**



**FRAME PROFILE**

**FRAME CONFIGURATION**



**NOTE:**

FRAME AND GLASS SIZES ARE SHOWN IN A GENERAL CONFIGURATION. ACTUAL FRAME AND GLASS SIZES DEPEND ON THE BULLET RESISTANT RATING.

**WINDOW INFORMATION**

MODEL NUMBER: \_\_\_\_\_  
 MATERIAL: \_\_\_\_\_  
 PRIMER: \_\_\_\_\_

**UL 752 LEVEL**

- 1 - MPSA (MEDIUM POWER SMALL ARMS)
- 2 - HPSA (HIGH POWER SMALL ARMS)
- 3 - SPSA (SUPER POWER SMALL ARMS)
- 4 - HPR (HIGH POWER RIFLE)

**FIRE RATING\***

UL LABEL:  3/4 HOUR  No Label

\* MAXIMUM LIGHT SIZES WITH UL:  
 -Wire Glass - 1296 in<sup>2</sup>

\* NOTE:  
 -Larger sizes are available with the use of Firelite glass.  
 -Maximum UL listed sizes apply, please contact the factory.

**GLASS INFORMATION**

GLASS PROVIDED BY:  OVERLY  OTHERS

NOTE: If glass is provided by others, Overly must specify the size and configuration in order to meet the bullet resistant rating.

**FRAME INFORMATION**

FRAME CONFIGURATION: \_\_\_\_\_  
 FRAME ANCHORAGE: \_\_\_\_\_  
 (A) OVERALL FRAME WIDTH: \_\_\_\_\_"  
 (B) OVERALL FRAME HEIGHT: \_\_\_\_\_"  
 (C) JAMB DEPTH: \_\_\_\_\_"  
 (D) WALL THICKNESS: \_\_\_\_\_"  
 (E) JAMB TRIM: \_\_\_\_\_"  
 (F) HEAD TRIM: \_\_\_\_\_"  
 (G) SILL TRIM: \_\_\_\_\_"  
 ROUGH OPENING: \_\_\_\_\_"

**WALL TYPE:**

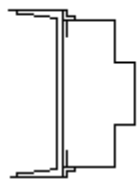
- MASONRY/CMU  CHANNEL/TUBE STEEL
- METAL STUD \*  WOOD STUD

\*SPLIT AND EWA ONLY: Wood blocking must be placed behind metal studs.

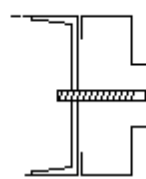
**MULLION INFORMATION**

VERTICAL MULLION REQUIRED?:  YES  NO IF YES, SPECIFY QUANTITY: \_\_\_\_\_  
 HORIZONTAL MULLION REQUIRED?:  YES  NO IF YES, SPECIFY QUANTITY: \_\_\_\_\_  
 (H) MULLION TRIM SIZE: \_\_\_\_\_"

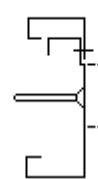
**REMARKS:**



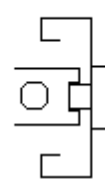
**CF-WLD**  
WELD-IN FRAME



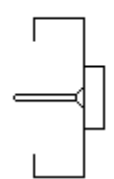
**CF-BLT**  
BOLT-IN CHANNEL IRON



**SPLIT**  
SPLIT FRAME



**NMA**  
NEW MASONRY ANCHOR



**EWA**  
EXISTING WALL ANCHOR

**FRAME ANCHORAGE**